

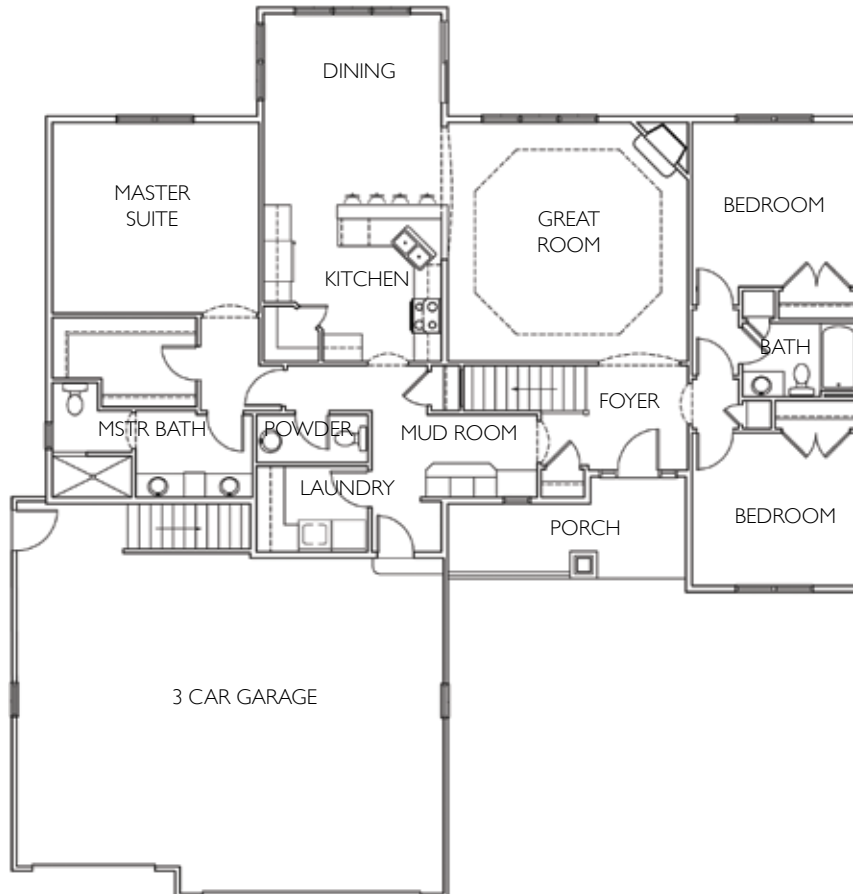


**1928  
Timberline  
Drive  
Town of Algoma**

Directions: Hwy 21 west to  
Leonards Point Rd., go north to  
Timberline Dr. Then south to  
address.

**FOR SALE**

1952 sq. ft. ❖ 3 bedrooms ❖ 2.5 baths



**HOME FEATURES**

- ❖ Gorgeous open concept split bedroom ranch
- ❖ Great room with octagon tray ceiling
- ❖ Fabulous custom birch kitchen with granite tops
- ❖ Private master suite with ceramic walk-in shower
- ❖ Generous dining area with views from 3 sides
- ❖ Huge mudroom with lockers and catchall
- ❖ Many arched openings and incredible stone fireplace
- ❖ Super laundry room with sink and folding area
- ❖ 3 car garage with faucet and drain
- ❖ Home has exceptional curb appeal with quaint front porch