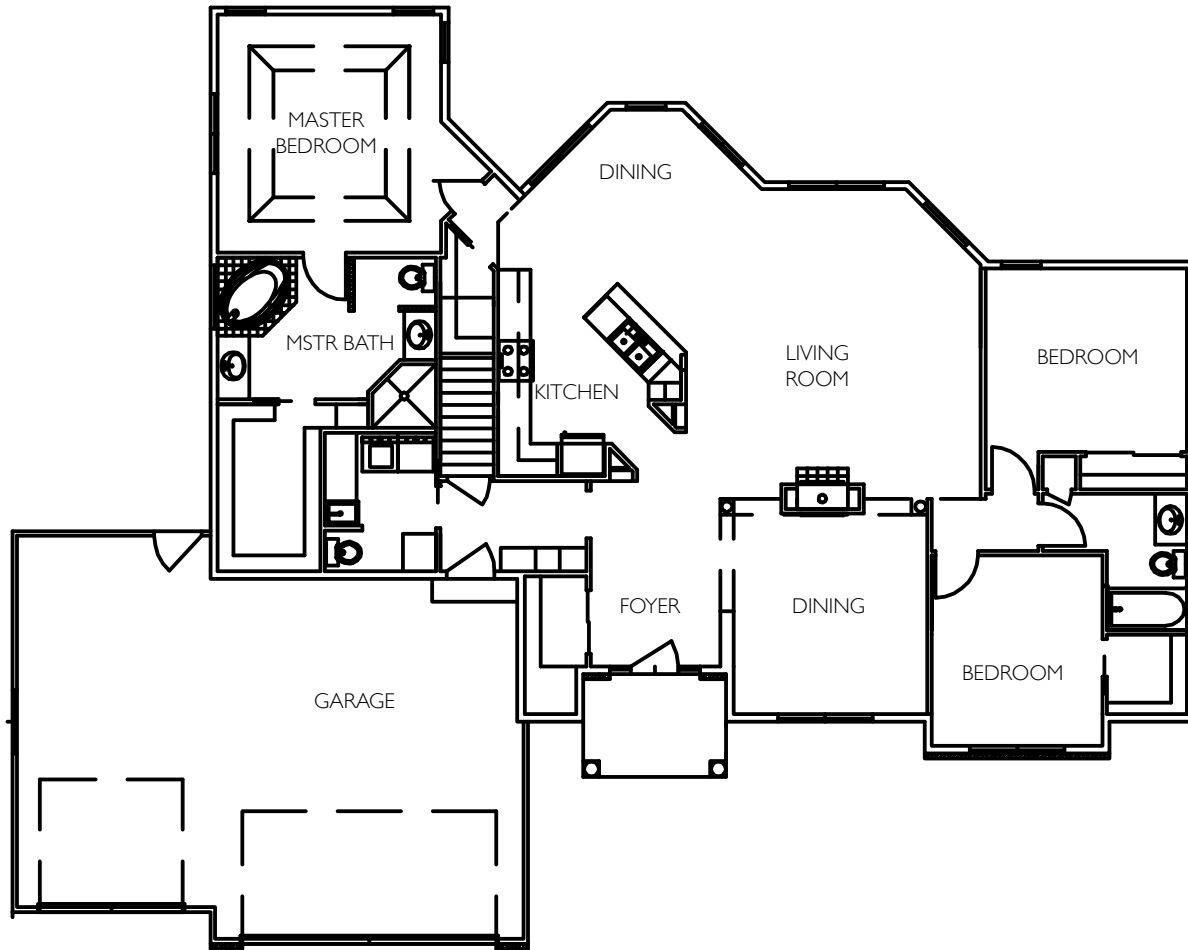




**1922
Timberline
Drive
Town of Algoma**

Directions: From Hwy 21, north on Leonard's Point Rd to Lake Butte Des Morts, then west on Leonard's Point Rd to Timberline Dr; then south on Timberline Dr to Parade home.

2075 sq. ft. ❖ 3 bedrooms ❖ 2.5 baths



HOME FEATURES

- ❖ Peaceful rural setting
- ❖ Energy efficient
- ❖ Gourmet kitchen with custom cabinetry and granite tops
- ❖ Split bedroom, open concept with special ceiling features
- ❖ Deluxe master suite with ceramic tile shower and whirlpool
- ❖ Spacious closets and lockers at rear entry
- ❖ Hardwood floors
- ❖ Natural stone veneer
- ❖ Large expandable basement with egress window
- ❖ Finished three car garage