

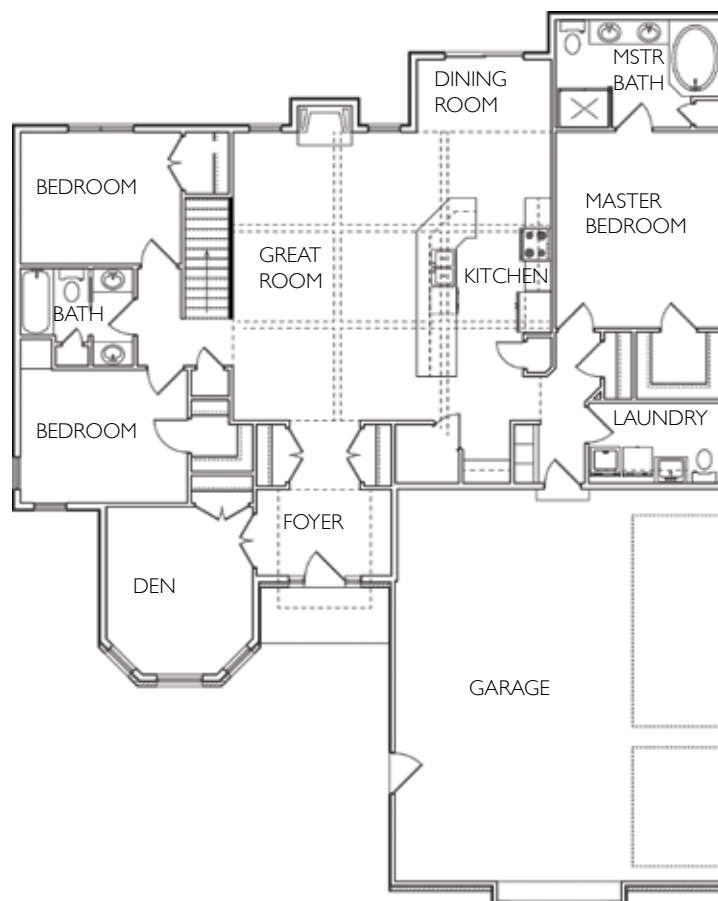


1465 Olde Apple Lane Oshkosh

Directions: Hwy 21 to Leonard Point Rd. Second left on Duchess Ln., left on Olde Apple Ln to address.

FOR SALE

1910 sq. ft. ❖ 3 bedrooms ❖ 2.5 baths



HOME FEATURES

- ❖ This super energy efficient smart design is perfect for today's lifestyles
- ❖ No wasted space
- ❖ Excellent curb appeal
- ❖ Innovative open concept
- ❖ Oversized family/kitchen area for family activities/entertaining
- ❖ Flex room offers options for formal dining, office, etc.
- ❖ Spacious master bedroom
- ❖ 3-car garage has plenty of space
- ❖ Since 1989 Dramatic Design floor plans offer detail and great resale!